

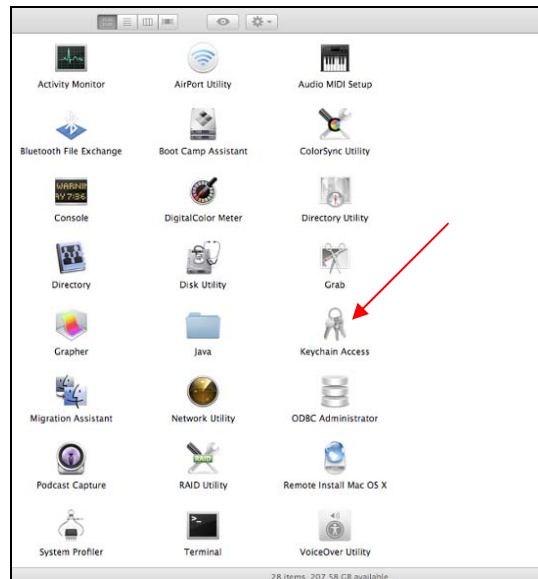
## Mac ~ Connecting to Kent Wireless

*NOTE: These steps are for Mac OS 10.5.x (Leopard). The steps to configure a Mac running OS 10.4.x (Tiger) are different from the steps that appear below. You can check the OS version at Apple Menu -> About This Mac.*

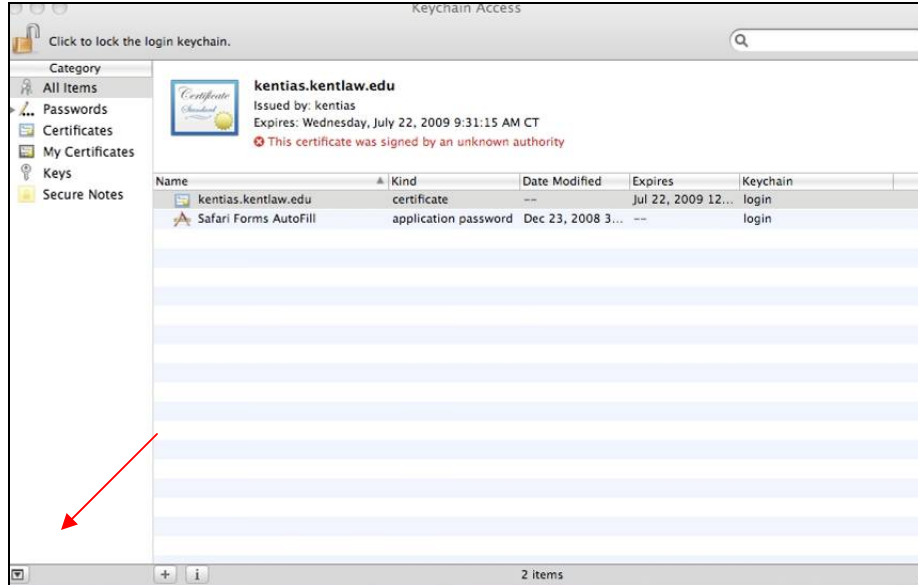
1. Click on the Airport icon near the time on the upper right-hand side of the screen and select "kent" from the list of networks
2. Enter "stuart" in for the username and "stuart2005+" for the password - click ok



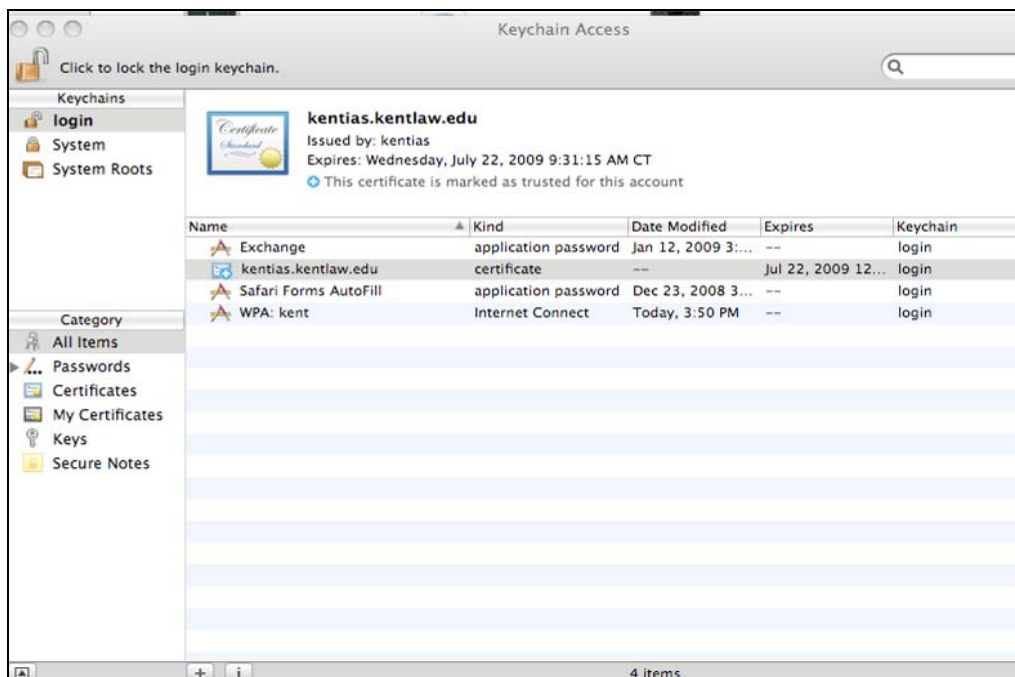
3. On the menu bar for Finder, click Go ->Utilities
4. Open the KeyChain Access program



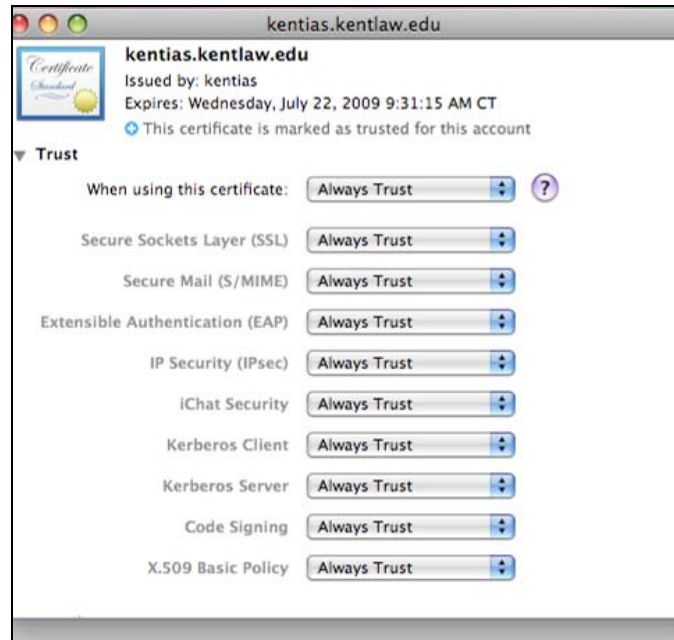
5. Click on the button to the left to show the entire list of Keychains



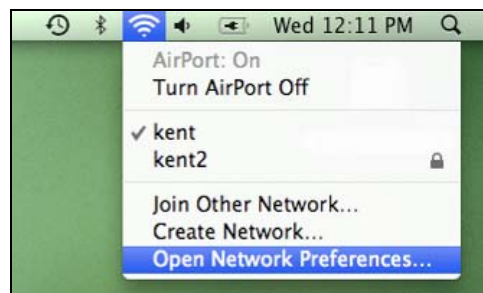
6. In the login keychain, select kentias.kentlaw.edu
- a. If you do not see this keychain please map a drive to smb://kentnet2/programs and go to the Mac Print folder
    - i. The keychain is stored in the Wireless Certificates – Mac folder
    - ii. Grad the kentias.kentlaw.edu keychain into your list



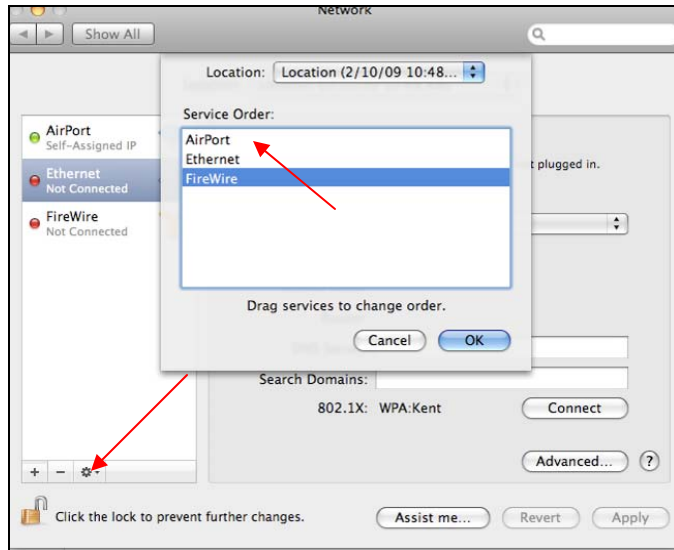
7. Double-click kentias.kentlaw.edu and expand the Trust option
8. Change settings to Always Trust



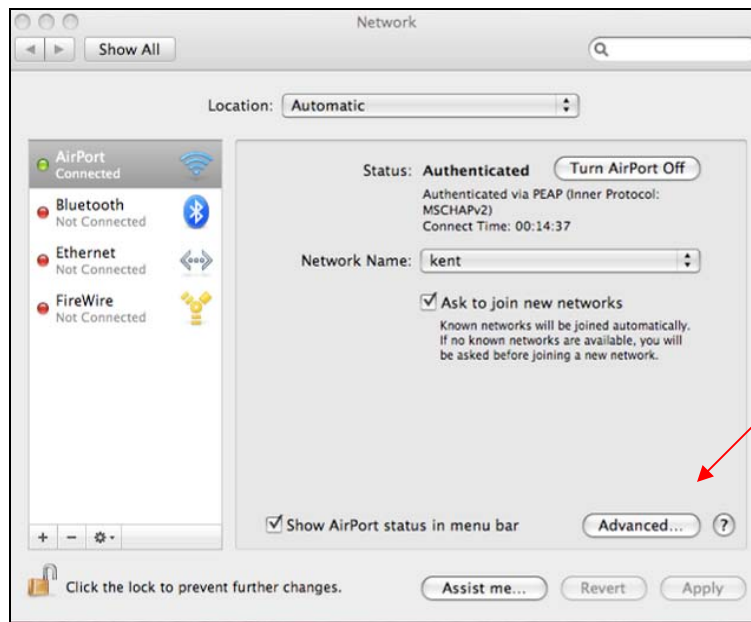
9. Close this page and click on the Airport icon near the time on the upper right-hand side of the screen and select Open Network Preferences



10. Be sure that AirPort is the first service
  - a. Click the icon to the right of the + and select "Set Service Order"
  - b. Drag AirPort to the top if it is not already there and choose OK

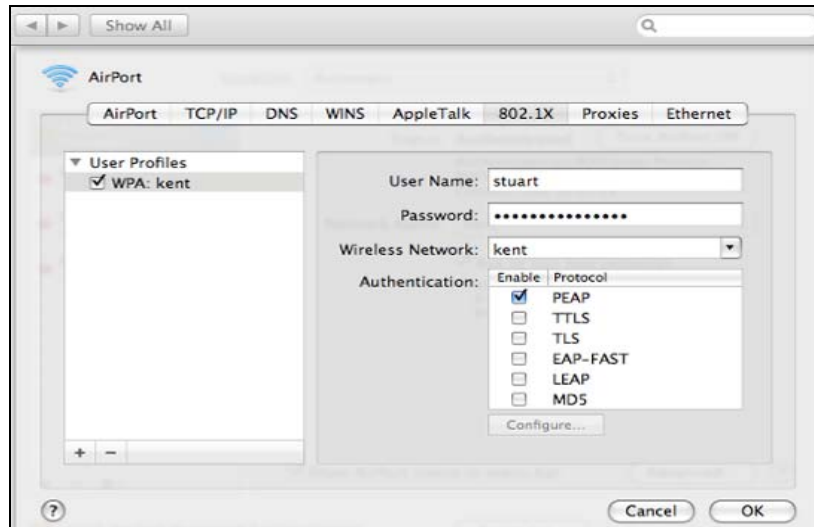


11. Make certain that “Airport” is selected in the connection list on the left. Then click the Advanced button.



12. Click on the 802.1X heading

13. In the “Authentication” list, uncheck everything except PEAP. If PEAP is not at the top of the list, click on the name and drag it to the top.



14. If you do not see the WPA: kent user profile please create one
- Click the + size and select Add User Profile
  - Name it WPA: kent
  - Username: stuart
  - Password: stuart2005+
  - Wireless Network: choose Kent
  - Authentication: uncheck everything except PEAP. If PEAP is not at the top if the list, click on the name and drag it to the top.

**NOTE:**

*The certificate for kentias.kentlaw.edu mentioned in step 6 is valid only for one year from the date it was issued. After this time, a new certificate for kentias.kentlaw.edu will automatically be issued and the previous certificate will be considered to be expired. At the time this document is being written, the certificate for kentias.kentlaw.edu is set to expire on 7/22/2009.*

*When the new certificate is issued, the "always trust" setting that was set in step 8 may not automatically be set on the newly issued certificate. If that is the case, Mac users may suddenly see a notification box that looks like this when their "Kent" wireless connection is being established. Simply clicking the "continue" button should allow the wireless connection to authenticate and finish establishing itself.*

Verify Certificate

 **802.1X Authentication**  
The server certificate could not be validated because the root certificate is missing.

Always trust these certificates

 kentias.kentlaw.edu

 **kentias.kentlaw.edu**  
Issued by: kentias  
Expires: Wednesday, July 22, 2009 9:31:15 AM America/Chicago  
 This certificate was signed by an unknown authority

▶ Details  
▶ Trust Settings

 Hide Certificate      Cancel      Continue